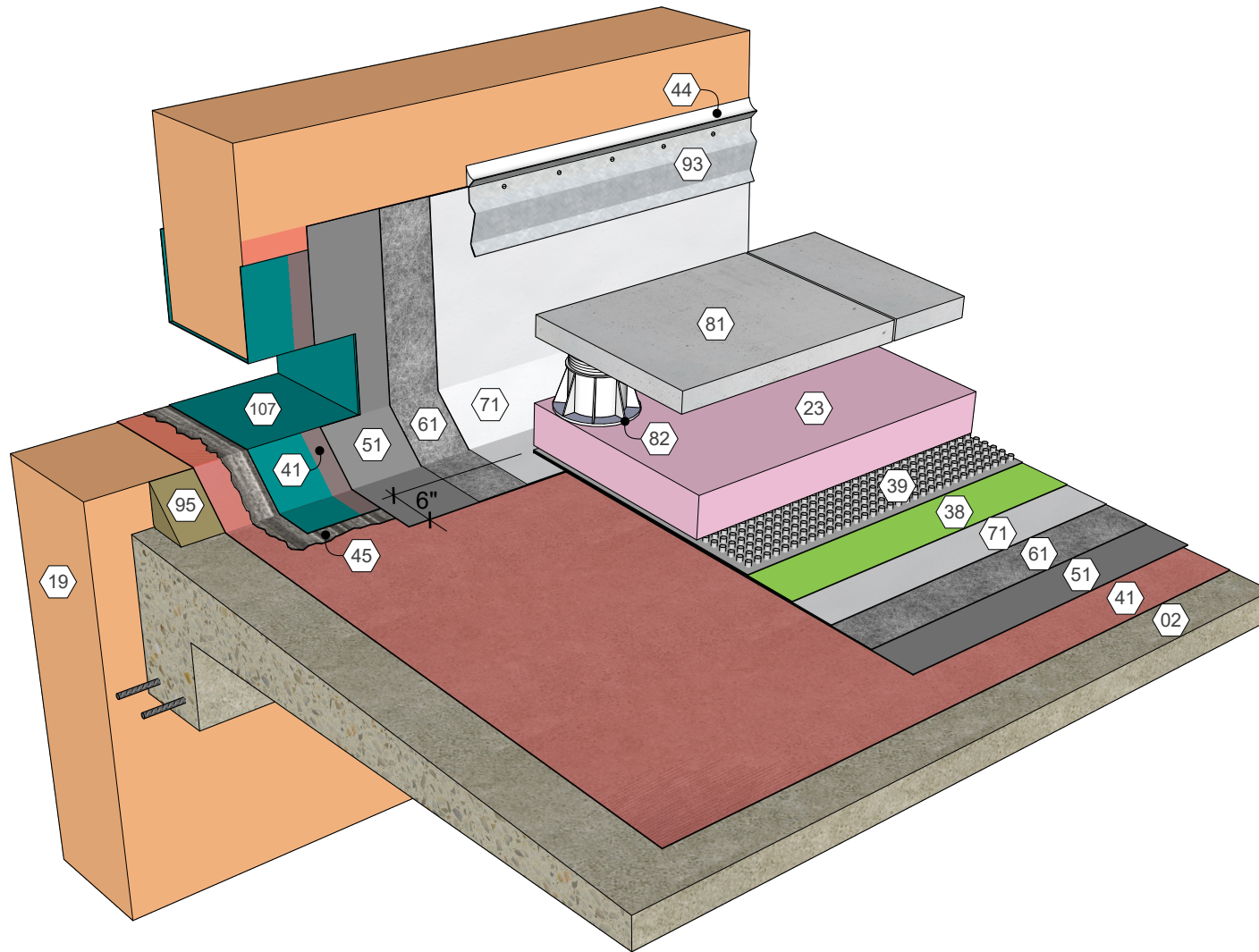


KEY NOTES

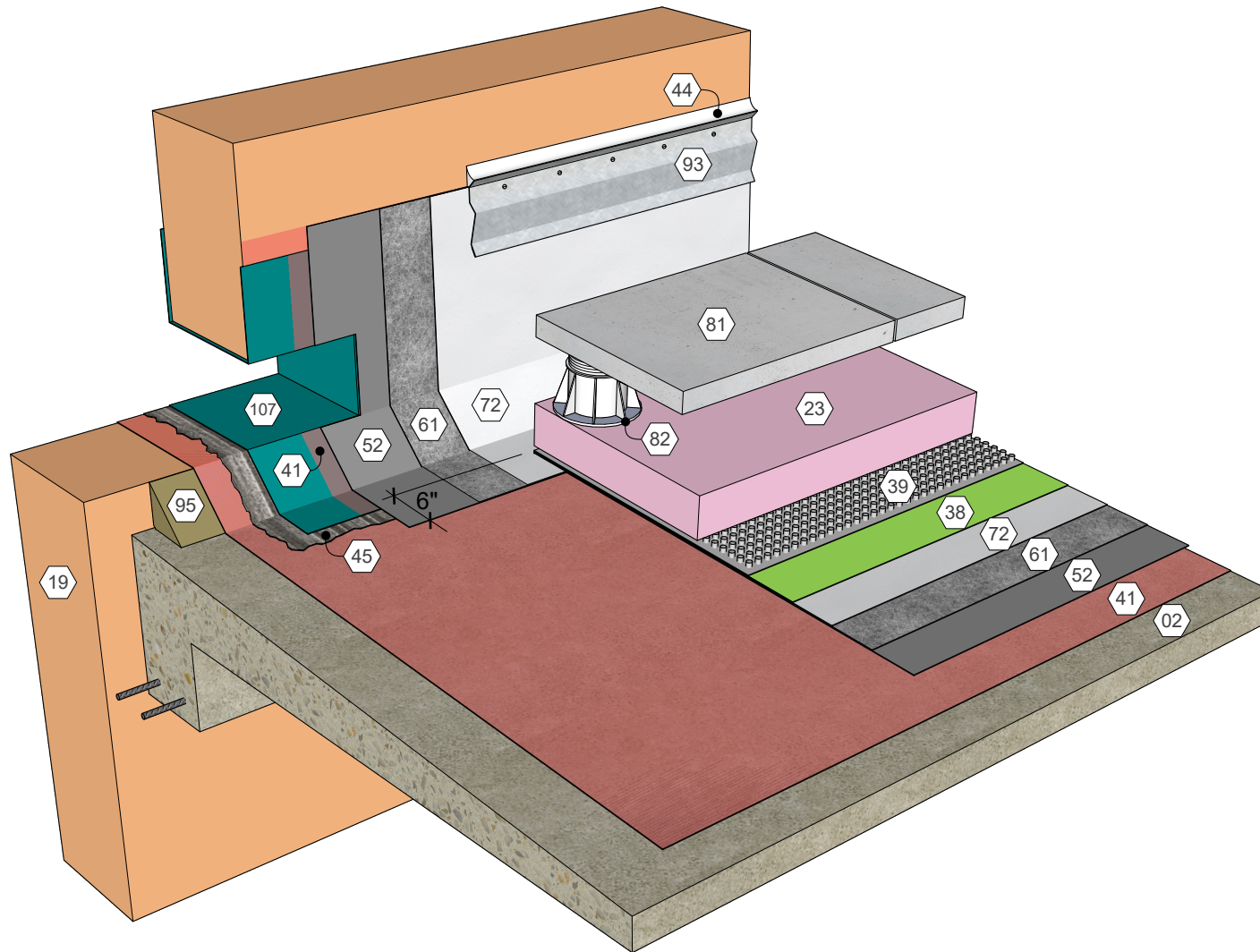
- 02 Structural Concrete Deck
- 19 Wall Assembly
- 23 Approved Insulation
- 38 Protection Sheet, Optional
- 39 Drainage Board
- 41 Approved Primer
- 44 Approved Sealant, Optional
- 45 Roofing Mastic
- 51 AlphaGuard MT/MTS Base Coat
- 61 AlphaGuard Glass Mat or Permafab
- 71 AlphaGuard MT/MTS Top Coat
- 81 Paver
- 82 Paver Pedestal
- 93 Counterflashing, Optional
- 95 Cant Strip
- 107 Sheet Metal Scupper



AlphaGuard® MT/MTS Plus Overflow Scupper Detail, Direct to Concrete
Detail 10241

KEY NOTES

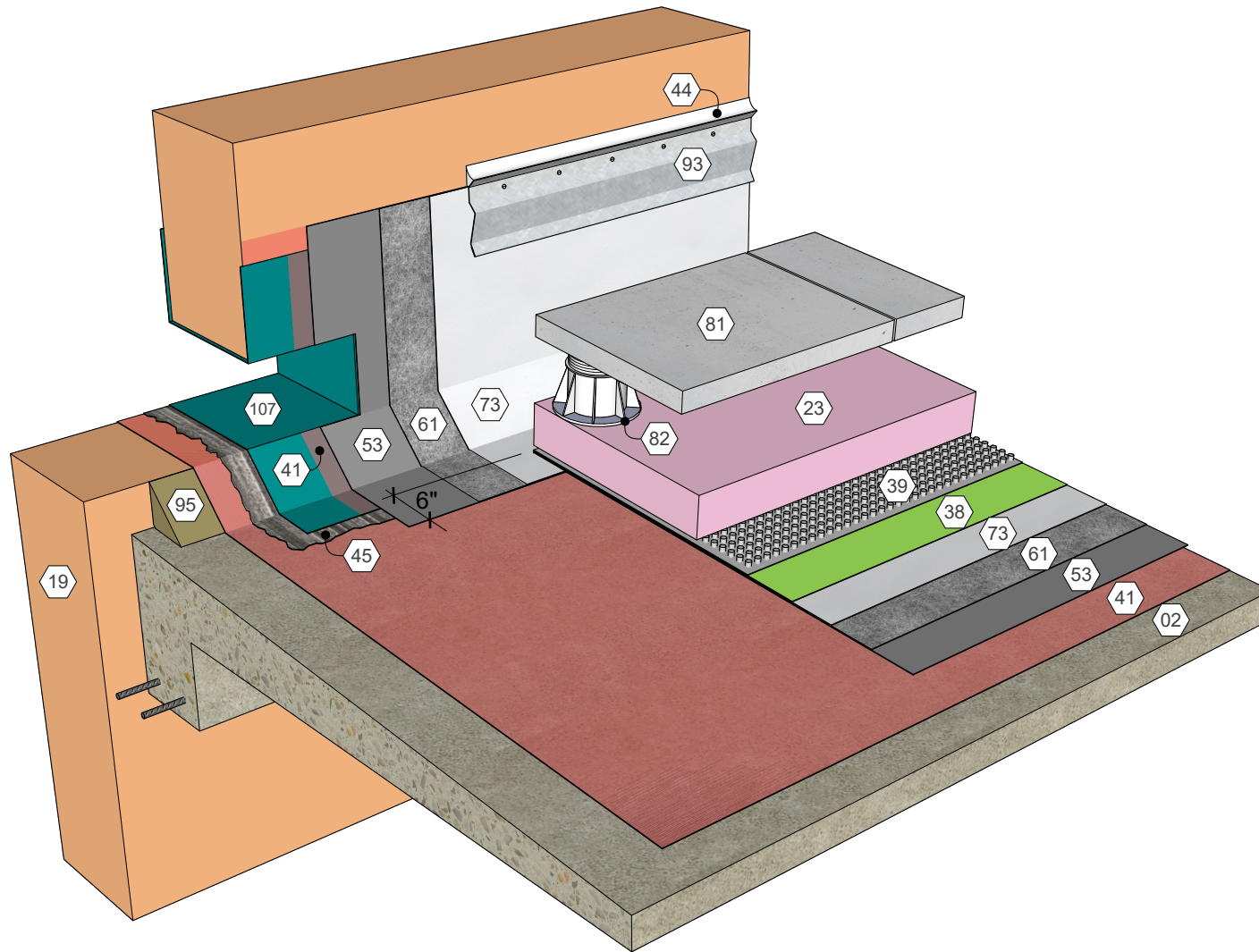
- 02 Structural Concrete Deck
- 19 Wall Assembly
- 23 Approved Insulation
- 38 Protection Sheet, Optional
- 39 Drainage Board
- 41 Approved Primer
- 44 Approved Sealant, Optional
- 45 Roofing Mastic
- 52 AlphaGuard BIO Base Coat
- 61 AlphaGuard Glass Mat or Permafab
- 72 AlphaGuard BIO Top Coat
- 81 Paver
- 82 Paver Pedestal
- 93 Counterflashing, Optional
- 95 Cant Strip
- 107 Sheet Metal Scupper



AlphaGuard® BIO Overflow Scupper Detail, Direct to Concrete
Detail 10242

KEY NOTES

- 02 Structural Concrete Deck
- 19 Wall Assembly
- 23 Approved Insulation
- 38 Protection Sheet, Optional
- 39 Drainage Board
- 41 Approved Primer
- 44 Approved Sealant, Optional
- 45 Roofing Mastic
- 53 AlphaGuard PUMA Base Coat
- 61 AlphaGuard Glass Mat or Permafab
- 73 AlphaGuard PUMA Top Coat
- 81 Paver
- 82 Paver Pedestal
- 93 Counterflashing, Optional
- 95 Cant Strip
- 107 Sheet Metal Scupper



AlphaGuard® PUMA Overflow Scupper Detail, Direct to Concrete
Detail 10243